

PART OF S.W. 1/4 OF  
SECTION 8, T.6N.,R.1W., S.L.B.&M.

TAXING UNIT: 25

IN OGDEN CITY  
SCALE 1" = 100'

ALSO SEE PAGE 42-3

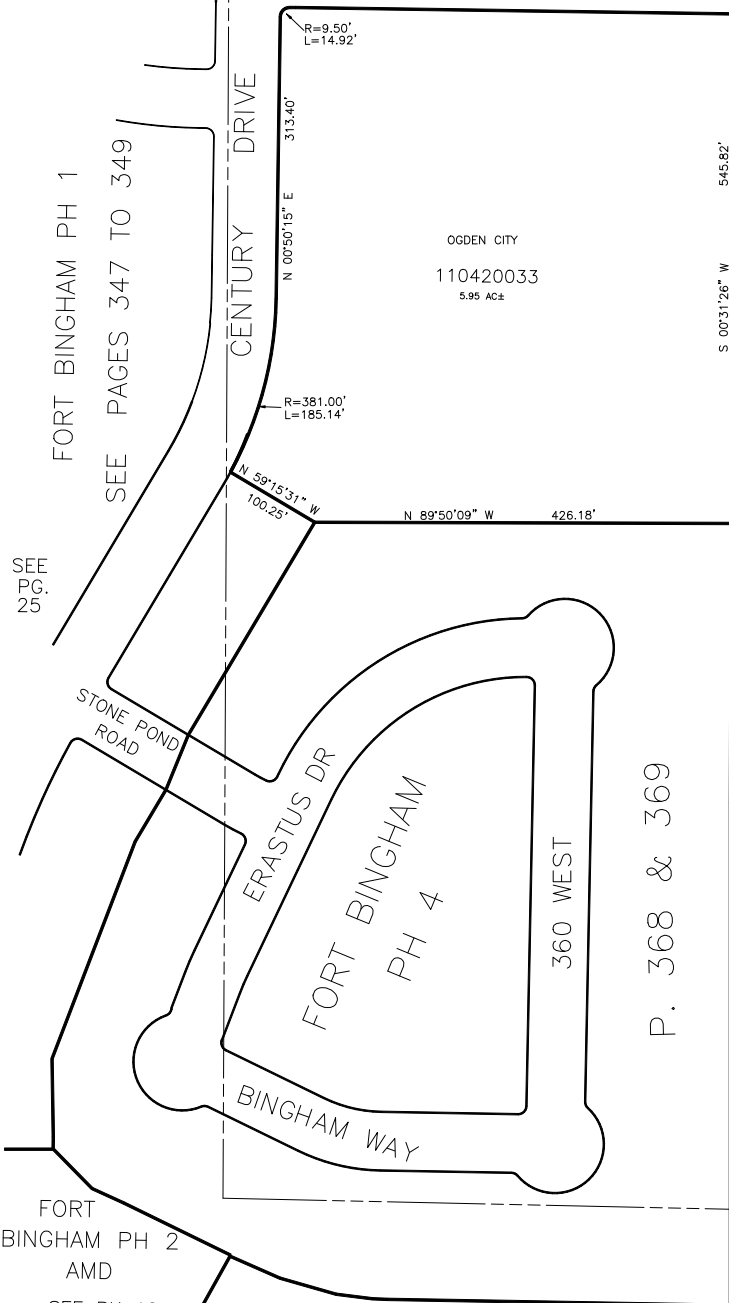
HARRISVILLE TOWN LIMITS

SEE PAGE 42-3

NOTE: S. 1/2 OF ST. NOT OPEN

SEE 110420032

NORTH STREET



SEE P.  
42-1

SEE  
PG.  
25.

FORT  
BINGHAM PH 2  
AMD  
SEE BK 12  
P. 213-215

SEE BOOK 12 PAGE 75-1